

# Chem-Impex International, Inc.

---

**Tel:** (630) 766-2112

**E-mail:** sales@chemimpex.com

**Shipping and Correspondence:**

935 Dillon Drive

Wood Dale, IL 60191

**Fax:** (630) 766-2218

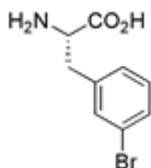
**Web site:** www.chemimpex.com

**Manufacturing site:**

825 Dillon Drive

Wood Dale, IL 60191

---



## Product Specifications

<b>Catalogue Number</b>	14322
<b>Product</b>	<b>3-Bromo- L-phenylalanine</b> L-Phe(3-Br)-OH <i>m</i> -Bromo-L-phenylalanine
<b>CAS Number</b>	82311-69-1
<b>Molecular Formula</b>	C <sub>9</sub> H <sub>10</sub> BrNO <sub>2</sub>
<b>Molecular Weight</b>	244.1
<hr/>	
<b>Synonym 3</b>	( <i>S</i> )-2-Amino-3-(3-bromophenyl)propionic acid
<b>Appearance</b>	Grey powder
<b>Solubility</b>	Clear solution (0.3 g in 1N NaOH)
<b>Melting Point</b>	208 - 210 °C
<b>Optical Rotation</b>	[α] <sup>20</sup> <sub>D</sub> = 3 ± 1 ° (C=2 in 1N NaOH)
<b>Infrared Spectrum</b>	Conforms to structure
<b>Analysis by Mass Spectra</b>	Conforms to standard
<b>Loss on Drying</b>	≤ 1.0% (80 °C, 2h)
<b><sup>1</sup>H NMR</b>	Conforms to structure
<b>Purity by HPLC</b>	≥ 98%
<b>Storage</b>	Store at 0 - 8 °C

**For Laboratory Use Only**