

Chem-Impex International, Inc.

Tel: (630) 766-2112

E-mail: sales@chemimpex.com

Shipping and Correspondence:

935 Dillon Drive

Wood Dale, IL 60191

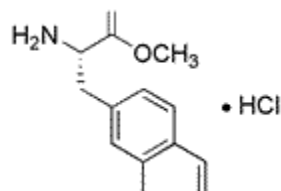
Fax: (630) 766-2218

Web site: www.chemimpex.com

Manufacturing site:

825 Dillon Drive

Wood Dale, IL 60191



Product Specifications

Catalogue Number	14304
Product	L-2-Naphthylalanine methyl ester hydrochloride L-Ala(2-naphthyl)-OMe•HCl
CAS Number	63024-26-0
Molecular Formula	C ₁₄ H ₁₅ NO ₂ •HCl
Molecular Weight	265.74

Appearance	White to yellow powder
Solubility	Clear solution (0.3 g in 3 mL MeOH)
Melting Point	173-179 °C
Water Content (Karl Fisher)	≤ 1.0%
Infrared Spectrum	Conforms to structure
Analysis by Mass Spectra	Conforms to standard
¹H NMR	Conforms to structure
Purity by HPLC	≥ 99%
Storage	Store at 0-8 °C

For Laboratory Use Only