

Chem-Impex International, Inc.

Tel: (630) 766-2112

E-mail: sales@chemimpex.com

Shipping and Correspondence:

935 Dillon Drive

Wood Dale, IL 60191

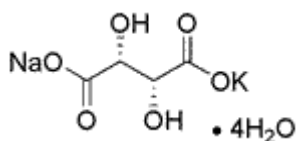
Fax: (630) 766-2218

Web site: www.chemimpex.com

Manufacturing site:

825 Dillon Drive

Wood Dale, IL 60191



Product Specifications

Catalogue Number	14272
Product	Potassium sodium tartrate tetrahydrate Rochelle salt Seignette salt
CAS Number	6381-59-5
Molecular Formula	C ₄ H ₄ KNaO ₆ ·4H ₂ O
Molecular Weight	282.2

Appearance	Colorless to white powder or white crystalline powder
Solubility	111 g in 100 mL water at 25 °C
Melting Point	75 °C (Approx.)
Heavy Metals	≤ 5 ppm (as Pb)
Anion	Phosphate (PO ₄ ³⁻) : ≤ 0.002% Chloride (Cl ⁻) : ≤ 0.001% Sulfate (SO ₄ ²⁻) : ≤ 0.005%
Cation	Ammonium (NH ₄) : ≤ 0.002% Calcium (Ca) : ≤ 0.005% Iron (Fe) : ≤ 0.001%
pH	6.0 - 8.5
Insoluble material	≤ 0.005%
Assay by titration	99 - 102%
Grade	ACS reagent
Storage	Store at RT

For Laboratory Use Only