

Chem-Impex International, Inc.

Tel: (630) 766-2112

E-mail: sales@chemimpex.com

Shipping and Correspondence:

935 Dillon Drive

Wood Dale, IL 60191

Fax: (630) 766-2218

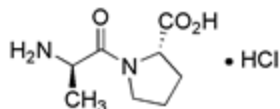
Web site: www.chemimpex.com

Manufacturing site:

825 Dillon Drive

Wood Dale, IL 60191

Product Specifications



Catalogue Number	14252
Product	D-Ala-Pro-OH•HCl
CAS Number	61430-12-4 (net)
Molecular Formula	C ₈ H ₁₄ N ₂ O ₃ •HCl
Molecular Weight	222.71

Optical Rotation	[α] _D ²⁰ = -82 ± 2° (C=1 in HCl)
Purity	≥ 98%
Storage	Store at 0-8°C

For Laboratory Use Only