

Chem-Impex International, Inc.

Tel: (630) 766-2112

E-mail: sales@chemimpex.com

Shipping and Correspondence:

935 Dillon Drive

Wood Dale, IL 60191

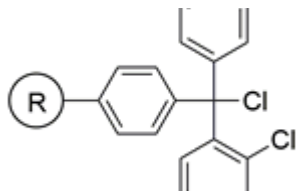
Fax: (630) 766-2218

Web site: www.chemimpex.com

Manufacturing site:

825 Dillon Drive

Wood Dale, IL 60191



Product Specifications

Catalogue Number 12996

Product **2-Chlorotrityl chloride resin**

2-Chlorotriphenylmethyl chloride resin

CAS Number 42074-68-0

Appearance Yellow beads

Swelling in DCM 4 - 8 mL/gm

Swelling in DMF 3 - 6 mL/gm

Kaiser Test Negative

Infrared Spectrum Conforms to structure

Loss on Drying $\leq 2\%$ (5 hours in vacuum at $40 \pm 1^\circ\text{C}$ and 1 mmHg pressure)

Mesh Size 200 - 400 mesh

Substitution (meq/g) 1.0 - 1.2 meq/g

% DVB 1% DVB

Storage Store at $0 - 8^\circ\text{C}$

For Laboratory Use Only