

Chem-Impex International, Inc.

Tel: (630) 766-2112

E-mail: sales@chemimpex.com

Shipping and Correspondence:

935 Dillon Drive

Wood Dale, IL 60191

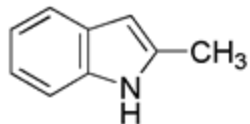
Fax: (630) 766-2218

Web site: www.chemimpex.com

Manufacturing site:

825 Dillon Drive

Wood Dale, IL 60191



Product Specifications

Catalogue Number	12992
Product	2-Methylindole
	α -Methylindole
CAS Number	95-20-5
Molecular Formula	C ₉ H ₉ N
Molecular Weight	131.18

Appearance	Light yellow to brown crystalline
Water Content (Karl Fisher)	≤ 0.5%
¹H NMR	Conforms to structure
Assay	≥ 99%
Storage	Store at 0-8 °C

For Laboratory Use Only