

Chem-Impex International, Inc.

Tel: (630) 766-2112

E-mail: sales@chemimpex.com

Shipping and Correspondence:

935 Dillon Drive

Wood Dale, IL 60191

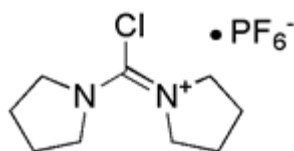
Fax: (630) 766-2218

Web site: www.chemimpex.com

Manufacturing site:

825 Dillon Drive

Wood Dale, IL 60191



Product Specifications

Catalogue Number	12939
Product	Chloro-dipyrrolidinocarbenium hexafluorophosphate PyCIU Chloro-N,N,N',N'-bis(tetra-methylene)-form-mamidi-nium hexafluoro-phosphate
CAS Number	135540-11-3
Molecular Formula	C ₉ H ₁₆ ClF ₆ N ₂ P

Appearance	White or off-white crystal
Melting Point	153-156 °C
Loss on Drying	≤ 0.5%
Purity by HPLC	≥ 98%
Storage	Store at 0-8 °C

For Laboratory Use Only