

Chem-Impex International, Inc.

Tel: (630) 766-2112

E-mail: sales@chemimpex.com

Shipping and Correspondence:

935 Dillon Drive

Wood Dale, IL 60191

Fax: (630) 766-2218

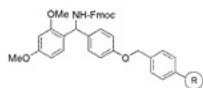
Web site: www.chemimpex.com

Manufacturing site:

825 Dillon Drive

Wood Dale, IL 60191

Product Specifications



Catalogue Number 12664

Product **Rink amide resin**
(0.7-0.9 meq/g, 70-90 mesh)

4-(2',4'-Dimethoxyphenyl-Fmoc-aminomethyl)phenoxy resin

| | |
|-----------------------------|-----------------------------------|
| Appearance | Pale white or slight yellow beads |
| Swelling in DCM | 4 - 6 ml/g |
| Swelling in DMF | 4 - 5 ml/g |
| Kaiser Test | Negative |
| Infrared Spectrum | Conforms to structure |
| Loss on Drying | ≤ 2% (40 ± 1 °C, 5h) |
| Mesh Size | 70 - 90 mesh |
| Substitution (meq/g) | 0.7 - 0.9 mmol/g |
| % DVB | 1% DVB |
| Storage | Store at 0 - 8 °C |

For Laboratory Use Only