

Chem-Impex International, Inc.

Tel: (630) 766-2112

E-mail: sales@chemimpex.com

Shipping and Correspondence:

935 Dillon Drive

Wood Dale, IL 60191

Fax: (630) 766-2218

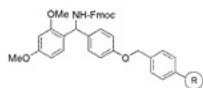
Web site: www.chemimpex.com

Manufacturing site:

825 Dillon Drive

Wood Dale, IL 60191

Product Specifications



Catalogue Number	12663
Product	Rink amide resin (0.3 - 0.8 mmol/g, 50 - 100 mesh) 4-(2',4'-Dimethoxyphenyl-Fmoc-aminomethyl)phenoxy resin

Appearance	Pale white or slight yellow beads
Mesh Size	50 - 100 mesh
Substitution (meq/g)	0.3 - 0.8 meq/g
% DVB	1% DVB
Storage	Store at 0 - 8 °C

For Laboratory Use Only