

Chem-Impex International, Inc.

Tel: (630) 766-2112

E-mail: sales@chemimpex.com

Shipping and Correspondence:

935 Dillon Drive

Wood Dale, IL 60191

Fax: (630) 766-2218

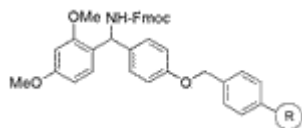
Web site: www.chemimpex.com

Manufacturing site:

825 Dillon Drive

Wood Dale, IL 60191

Product Specifications



Catalogue Number	12662
Product	Rink amide resin, 4-(2',4'-Dimethoxyphenyl-Fmoc-aminomethyl)phenoxy resin
CAS Number	1101762-22-4

Appearance	Pale white or slight yellow beads
Swelling in DCM	4.5 - 8.5 mL/g
Swelling in DMF	4 - 7 mL/g
Kaiser Test	Negative
Loss on Drying	≤ 2.0% (5 hours in vacuum oven at 40 ± 1 °C)
Mesh Size	100 - 200 mesh
Substitution (meq/g)	0.3 - 0.6 mmol/g
% DVB	1% DVB
Storage	Store at 0 - 8 °C

For Laboratory Use Only