

Chem-Impex International, Inc.

Tel: (630) 766-2112

E-mail: sales@chemimpex.com

Shipping and Correspondence:

935 Dillon Drive

Wood Dale, IL 60191

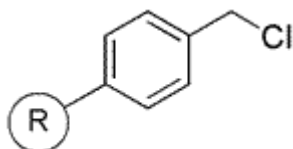
Fax: (630) 766-2218

Web site: www.chemimpex.com

Manufacturing site:

825 Dillon Drive

Wood Dale, IL 60191



Product Specifications

Catalogue Number	12471
Product	Chloromethylated polystyrene (2.0-4.5 meq/g, 200-400 mesh)
	Merrifield resin
CAS Number	55844-94-5

Appearance	Pale to yellow beads
Loss on Drying	≤ 0.5% (105 ± 3 °C, 1.5h)
Mesh Size	200-400 mesh
Substitution (meq/g)	2.0-4.5 meq/g
% DVB	2% DVB
Storage	Store at RT

For Laboratory Use Only