

Chem-Impex International, Inc.

Tel: (630) 766-2112

E-mail: sales@chemimpex.com

Shipping and Correspondence:

935 Dillon Drive

Wood Dale, IL 60191

Fax: (630) 766-2218

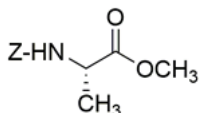
Web site: www.chemimpex.com

Manufacturing site:

825 Dillon Drive

Wood Dale, IL 60191

Product Specifications



Catalogue Number	12199
Product	Z-L-alanine methyl ester Z-L-Ala-OMe
CAS Number	28819-05-8
Molecular Formula	C ₁₂ H ₁₅ NO ₄
Molecular Weight	237.25

Appearance	White powder
Optical Rotation	[α] _D ²⁰ = -23 ± 2 ° (C=1 in DMF) [α] _D ²⁰ = -33 to -37 ° (C=1 in MeOH)
Purity by HPLC	≥ 98%
Storage	Store at 0 - 8°C

For Laboratory Use Only