

Chem-Impex International, Inc.

Tel: (630) 766-2112

E-mail: sales@chemimpex.com

Shipping and Correspondence:

935 Dillon Drive

Wood Dale, IL 60191

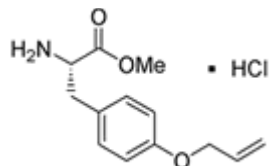
Fax: (630) 766-2218

Web site: www.chemimpex.com

Manufacturing site:

825 Dillon Drive

Wood Dale, IL 60191



Product Specifications

| | |
|--------------------------|--|
| Catalogue Number | 12119 |
| Product | O-Allyl-L-tyrosine methyl ester hydrochloride L-Tyr(All)-OMe•HCl |
| CAS Number | 138535-28-1 |
| Molecular Formula | C ₁₃ H ₁₇ NO ₃ •HCl |
| Molecular Weight | 271.74 |

| | |
|---------------------------|--|
| Appearance | White crystalline powder |
| Melting Point | 188 - 194 °C |
| Optical Rotation | [α] _D ²⁰ = 11.0 - 12.5 ° (C=1 in MeOH) |
| Assay by titration | 98.5 - 100.5% |
| Purity by HPLC | ≥ 99% |
| Storage | Store at 0 - 8 °C |

For Laboratory Use Only