

Chem-Impex International, Inc.

Tel: (630) 766-2112

E-mail: sales@chemimpex.com

Shipping and Correspondence:

935 Dillon Drive

Wood Dale, IL 60191

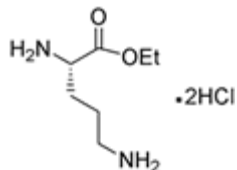
Fax: (630) 766-2218

Web site: www.chemimpex.com

Manufacturing site:

825 Dillon Drive

Wood Dale, IL 60191



Product Specifications

Catalogue Number	12090
Product	L-Ornithine ethyl ester dihydrochloride
	L-Orn-OEt•2HCl
CAS Number	84772-29-2
Molecular Formula	C ₇ H ₁₆ N ₂ O ₂ •2HCl
Molecular Weight	233.19

Appearance	Snow white (hygroscopic)
Melting Point	170-176 °C
¹H NMR	Conforms to structure
Purity	≥ 99% (NMR)
Storage	Store at 0-8 °C

For Laboratory Use Only