

Chem-Impex International, Inc.

Tel: (630) 766-2112

E-mail: sales@chemimpex.com

Shipping and Correspondence:

935 Dillon Drive

Wood Dale, IL 60191

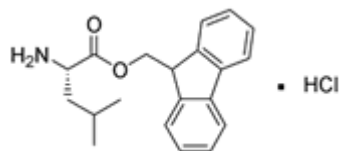
Fax: (630) 766-2218

Web site: www.chemimpex.com

Manufacturing site:

825 Dillon Drive

Wood Dale, IL 60191



Product Specifications

Catalogue Number 12079

Product

**L-Leucine 9-fluorenylmethyl ester
hydrochloride**

L-Leu-OFm•HCl

(S)-2-Amino-4-methyl-pentanoic acid 9-fluorenylmethyl ester
hydrochloride

Molecular Formula C₂₀H₂₃NO₂•HCl

Appearance White powder

Melting Point 167-174 °C

Optical Rotation [α]_D²⁰ = -16 ± 2° (C=1 in MeOH)

Related Substances H-Leu-OH: ≤ 0.5%

Assay ≥ 99% (AgNO₃)

Purity by HPLC ≥ 99%

Purity by TLC Conforms to reference

Storage Store at 0-8 °C

For Laboratory Use Only