

Chem-Impex International, Inc.

Tel: (630) 766-2112

E-mail: sales@chemimpex.com

Shipping and Correspondence:

935 Dillon Drive

Wood Dale, IL 60191

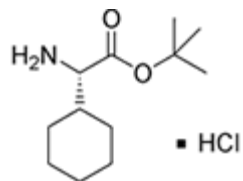
Fax: (630) 766-2218

Web site: www.chemimpex.com

Manufacturing site:

825 Dillon Drive

Wood Dale, IL 60191



Product Specifications

Catalogue Number	12004
Product	L-2-Cyclohexylglycine <i>tert</i>-butyl ester hydrochloride L-Chg-OtBu•HCl H-L-Cyclohexyl-Gly-OtBu•HCl
CAS Number	213475-52-6
Molecular Formula	C ₁₂ H ₂₃ NO ₂ •HCl
Molecular Weight	249.82
Appearance	White to off-white powder
Loss on Drying	≤ 0.5%
Assay	≥ 98%
Storage	Store at 0 - 8 °C

For Laboratory Use Only