

# Chem-Impex International, Inc.

---

**Tel:** (630) 766-2112

**E-mail:** sales@chemimpex.com

**Shipping and Correspondence:**

935 Dillon Drive

Wood Dale, IL 60191

**Fax:** (630) 766-2218

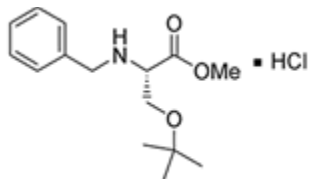
**Web site:** www.chemimpex.com

**Manufacturing site:**

825 Dillon Drive

Wood Dale, IL 60191

---



## Product Specifications

<b>Catalogue Number</b>	11917
<b>Product</b>	<b>Benzyl-<i>O</i>-<i>tert</i>-butyl-L-serine methyl ester hydrochloride</b> Bzl-L-Ser(tBu)-OMe•HCl
<b>CAS Number</b>	670278-82-7
<b>Molecular Formula</b>	C <sub>15</sub> H <sub>23</sub> NO <sub>3</sub> •HCl
<b>Molecular Weight</b>	301.84
<hr/>	
<b>Appearance</b>	White crystalline powder
<b>Melting Point</b>	133-139 °C
<b>Optical Rotation</b>	[α] <sub>D</sub> <sup>20</sup> = +8 ± 2° (C=1% in MeOH)
<b>Assay by titration</b>	≥ 98%
<b>Purity by HPLC</b>	≥ 99%
<b>Purity by TLC</b>	≥ 99%
<b>Storage</b>	Store at 0-8 °C

**For Laboratory Use Only**