

Chem-Impex International, Inc.

Tel: (630) 766-2112

E-mail: sales@chemimpex.com

Shipping and Correspondence:

935 Dillon Drive

Wood Dale, IL 60191

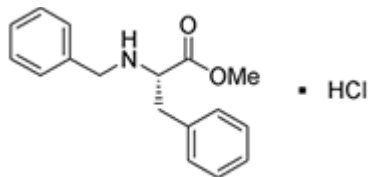
Fax: (630) 766-2218

Web site: www.chemimpex.com

Manufacturing site:

825 Dillon Drive

Wood Dale, IL 60191



Product Specifications

Catalogue Number	11916
Product	Benzyl-L-phenylalanine methyl ester hydrochloride Bzl-L-Phe-OMe•HCl
CAS Number	7703-09-5
Molecular Formula	C ₁₇ H ₁₉ NO ₂ •HCl
Molecular Weight	305.81
<hr/>	
Appearance	White crystalline powder
Melting Point	142-155 °C
Optical Rotation	[α] _D ²⁰ = +41.0 to +44.5° (C=1 in MeOH)
Assay by titration	99%
Purity by HPLC	≥ 99%
Purity by TLC	≥ 99%
Storage	Store at 0-8 °C

For Laboratory Use Only