

Chem-Impex International, Inc.

Tel: (630) 766-2112

E-mail: sales@chemimpex.com

Shipping and Correspondence:

935 Dillon Drive

Wood Dale, IL 60191

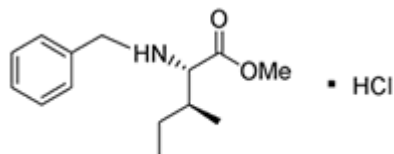
Fax: (630) 766-2218

Web site: www.chemimpex.com

Manufacturing site:

825 Dillon Drive

Wood Dale, IL 60191



Product Specifications

Catalogue Number 11913
Product **Benzyl-L-isoleucine methyl ester hydrochloride**

Benzyl-L-isoleucine methyl ester hydrochloride

CAS Number 209325-69-9, 402929-56-0

Molecular Formula C₁₄H₂₁NO₂·HCl

Molecular Weight 271.82

Appearance White crystalline powder
Melting Point 176-182 °C
Optical Rotation [α]_D²⁰ = +26 ± 2° (C=1 in MeOH)
Assay by titration ≥ 99%
Purity by HPLC ≥ 99%
Purity by TLC ≥ 98%
Storage Store at 0-8 °C

For Laboratory Use Only