

Chem-Impex International, Inc.

Tel: (630) 766-2112

E-mail: sales@chemimpex.com

Shipping and Correspondence:

935 Dillon Drive

Wood Dale, IL 60191

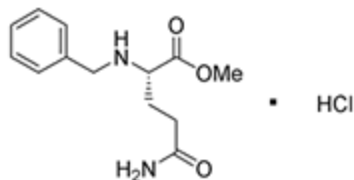
Fax: (630) 766-2218

Web site: www.chemimpex.com

Manufacturing site:

825 Dillon Drive

Wood Dale, IL 60191



Product Specifications

Catalogue Number	11910
Product	N-Benzyl-L-glutamine methyl ester hydrochloride Bzl-L-Gln-OMe•HCl
CAS Number	402929-52-6
Molecular Formula	C ₁₃ H ₁₈ N ₂ O ₃ •HCl
Molecular Weight	286.79
<hr/>	
Appearance	White crystalline powder
Melting Point	125-132 °C
Optical Rotation	[α] _D ²⁰ = +5 ± 2° (C=1 in MeOH)
Assay by titration	≥ 99%
Purity by HPLC	≥ 99%
Purity by TLC	≥ 99%
Storage	Store at 0-8 °C

For Laboratory Use Only