

Chem-Impex International, Inc.

Tel: (630) 766-2112

E-mail: sales@chemimpex.com

Shipping and Correspondence:

935 Dillon Drive

Wood Dale, IL 60191

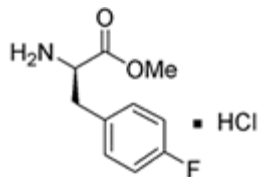
Fax: (630) 766-2218

Web site: www.chemimpex.com

Manufacturing site:

825 Dillon Drive

Wood Dale, IL 60191



Product Specifications

Catalogue Number	11688
Product	4-Fluoro-D-Phenylalanine methyl ester hydrochloride 4-Fluoro-D-Phe-OMe•HCl H- <i>p</i> -Fluoro-D-Phe-OMe•HCl
CAS Number	176896-72-3
Molecular Formula	C ₁₀ H ₁₂ FNO ₂ •HCl
Molecular Weight	233.67
Appearance	Snow white solid
Melting Point	169-175 °C
¹H NMR	Conforms to structure
Purity	≥ 99% (NMR)
Storage	Store at 0-8 °C

For Laboratory Use Only