

Chem-Impex International, Inc.

Tel: (630) 766-2112

E-mail: sales@chemimpex.com

Shipping and Correspondence:

935 Dillon Drive

Wood Dale, IL 60191

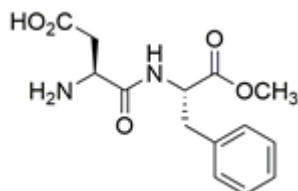
Fax: (630) 766-2218

Web site: www.chemimpex.com

Manufacturing site:

825 Dillon Drive

Wood Dale, IL 60191



Product Specifications

Catalogue Number	10747
Product	Aspartame H-Asp-Phe-OMe N-(L- α -Aspartyl)-L-phenylalanine methyl ester
CAS Number	22839-47-0
Molecular Formula	C ₁₄ H ₁₈ N ₂ O ₅
Molecular Weight	294.30

Appearance	White crystalline powder
Melting Point	248 - 255 °C
Optical Rotation	[α] ²⁰ _D = 12 - 17 ° (C=4 in 15 N Formic acid)
Infrared Spectrum	Conforms to structure
Analysis by Mass Spectra	Conforms to standard
¹H NMR	Conforms to structure
Purity by HPLC	≥ 98%
Storage	Store at 0 - 10 °C

For Laboratory Use Only