

Chem-Impex International, Inc.

Tel: (630) 766-2112

E-mail: sales@chemimpex.com

Shipping and Correspondence:

935 Dillon Drive

Wood Dale, IL 60191

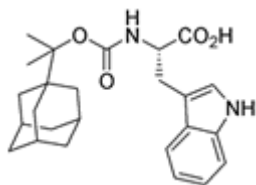
Fax: (630) 766-2218

Web site: www.chemimpex.com

Manufacturing site:

825 Dillon Drive

Wood Dale, IL 60191



Product Specifications

Catalogue Number	10660
Product	(1-{1'-Adamantyl}-1-methyl-ethoxycarbonyl)-Adpoc-L-Trp-OH
CAS Number	68388-91-0
Molecular Formula	C ₂₅ H ₃₂ N ₂ O ₄
Molecular Weight	424.54

Appearance	White to off-white powder
Infrared Spectrum	Conforms to structure
Analysis by Mass Spectra	Conforms to standard
Residual Solvents	Not detected
Related Substances	Impurities : Not detected
¹H NMR	Conforms to structure
Purity by HPLC	≥ 99.5%
Storage	Store at 0 - 8 °C

For Laboratory Use Only