

Chem-Impex International, Inc.

Tel: (630) 766-2112

E-mail: sales@chemimpex.com

Shipping and Correspondence:

935 Dillon Drive

Wood Dale, IL 60191

Fax: (630) 766-2218

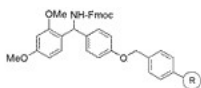
Web site: www.chemimpex.com

Manufacturing site:

825 Dillon Drive

Wood Dale, IL 60191

Product Specifications



Catalogue Number

10619

Product

**Rink amide resin
(0.3-0.8 meq/g, 200-400 mesh)**

4-(2',4'-Dimethoxyphenyl-Fmoc-aminomethyl)phenoxy resin

2',4'-Di-CH₃O-Ph-CH(NH-Fmoc)-Ph-4-OCH₂-polystyrene

Appearance

Pale white or slight yellow beads

Loss on Drying

≤ 2.0% (5 hours in vacuum at 40 ± 1 °C and 1 mmHg pressure)

Mesh Size

200 - 400 mesh

Substitution (meq/g)

0.3 - 0.8 meq/g

% DVB

1% DVB

Storage

Store at 0 - 8 °C

For Laboratory Use Only