

Chem-Impex International, Inc.

Tel: (630) 766-2112

E-mail: sales@chemimpex.com

Shipping and Correspondence:

935 Dillon Drive

Wood Dale, IL 60191

Fax: (630) 766-2218

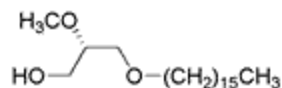
Web site: www.chemimpex.com

Manufacturing site:

825 Dillon Drive

Wood Dale, IL 60191

Product Specifications



Catalogue Number	10559
Product	1-O-Hexadecyl-2-O-methyl-<i>sn</i>-glycerol
	1-O-Palmityl-2-O-methyl- <i>sn</i> -glycerol
CAS Number	96960-92-8
Molecular Formula	C ₂₁₀ H ₄₂ O ₃
Molecular Weight	330.55
<hr/>	
Appearance	White solid
Solubility	Clear colorless solution (50mg/mL in Chloroform)
Optical Rotation	[α] _D ²⁰ = -10 ± 2° (C=1 in CHCl ₃)
¹³C NMR	Conforms to structure
¹H NMR	Conforms to structure
Purity by HPLC	≥ 98%
Storage	Store at ≤ - 15 °C

For Laboratory Use Only