

Chem-Impex International, Inc.

Tel: (630) 766-2112

E-mail: sales@chemimpex.com

Shipping and Correspondence:

935 Dillon Drive

Wood Dale, IL 60191

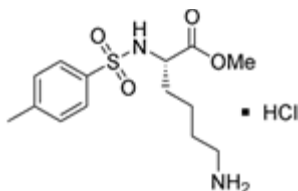
Fax: (630) 766-2218

Web site: www.chemimpex.com

Manufacturing site:

825 Dillon Drive

Wood Dale, IL 60191



Product Specifications

Catalogue Number	10098
Product	<i>N</i>^α-Tosyl-L-lysine methyl ester hydrochloride
	Tos-L-Lys-OMe•HCl
CAS Number	5266-48-8
Molecular Formula	C ₁₄ H ₂₂ N ₂ O ₄ S•HCl
Molecular Weight	350.87
Appearance	White powder
Solubility	clear, colorless solution (50 mg/mL in MeOH)
Melting Point	145-149° C
TLC System	Chloroform/Methanol/Acetic Acid/Water 60/45/14/6 n-Butanol/acetic acid/water 4/2/2 Ethylacetate/pyridine/acetic acid/water 6/4/1/3 plate: silicagel 60 F ₂₅₄ detected by: UV, ninhydrin, chlorine - tolidine
Assay	≥ 89%
Purity by TLC	≥ 99%
Storage	Store at 0-8°C
Additional Information	Chloride content: < 11% (AgNO ₃)

For Laboratory Use Only