

Chem-Impex International, Inc.

Tel: (630) 766-2112

E-mail: sales@chemimpex.com

Shipping and Correspondence:

935 Dillon Drive

Wood Dale, IL 60191

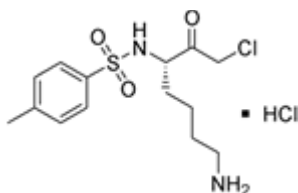
Fax: (630) 766-2218

Web site: www.chemimpex.com

Manufacturing site:

825 Dillon Drive

Wood Dale, IL 60191



Product Specifications

Catalogue Number	10097
Product	N^{α}-Tosyl-L-lysine chloromethylketone Tos-L-Lys-CMK•HCl
CAS Number	4272-74-6
Molecular Formula	$C_{14}H_{21}ClN_2O_3S \cdot HCl$
Molecular Weight	369.31

Appearance	White to off-white to yellowish powder
Solubility	Clear, colorless to slightly yellowish solution (50 mg/mL in Methanol)
Optical Rotation	$[\alpha]_D^{24} = -9 \pm 2^{\circ}$
Titration	$\geq 9\%$ (Chloride Content)
Assay	$\geq 99\%$
Purity by HPLC	$\geq 98\%$
Storage	Store at $\leq -4^{\circ}C$

For Laboratory Use Only