

# Chem-Impex International, Inc.

---

**Tel:** (630) 766-2112

**E-mail:** sales@chemimpex.com

**Shipping and Correspondence:**

935 Dillon Drive

Wood Dale, IL 60191

**Fax:** (630) 766-2218

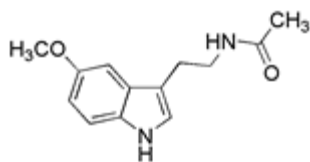
**Web site:** www.chemimpex.com

**Manufacturing site:**

825 Dillon Drive

Wood Dale, IL 60191

---



## Product Specifications

<b>Catalogue Number</b>	09492
<b>Product</b>	<b>N-Acetyl-5-methoxytryptamine</b>
	Melatonin
	3-(N-Acetyl-2-aminoethyl)-5-methoxyindole
<b>CAS Number</b>	73-31-4
<b>Molecular Formula</b>	C <sub>13</sub> H <sub>16</sub> N <sub>2</sub> O <sub>2</sub>
<b>Molecular Weight</b>	232.28
<hr/>	
<b>Appearance</b>	White to off-white crystalline powder
<b>Melting Point</b>	114-120 °C
<b>Heavy Metals</b>	≤ 10 ppm
<b>Arsenic (As<sub>2</sub>O<sub>2</sub>)</b>	≤ 10 ppm
<b>Loss on Drying</b>	≤ 0.5%
<b>Residue On Ignition</b>	≤ 0.5%
<b><sup>1</sup>H NMR</b>	Conforms to structure
<b>Assay</b>	≥ 99%
<b>Storage</b>	Store at RT

**For Laboratory Use Only**