

Chem-Impex International, Inc.

Tel: (630) 766-2112

E-mail: sales@chemimpex.com

Shipping and Correspondence:

935 Dillon Drive

Wood Dale, IL 60191

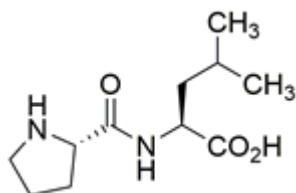
Fax: (630) 766-2218

Web site: www.chemimpex.com

Manufacturing site:

825 Dillon Drive

Wood Dale, IL 60191



Product Specifications

Catalogue Number	09071
Product	Pro-Leu-OH L-Prolyl-L-leucine H-Pro-Leu-OH
CAS Number	52899-07-7
Molecular Formula	C ₁₁ H ₂₀ N ₂ O ₃
Molecular Weight	228.29

Appearance	White powder
Appearance of Solution	Clear, colorless solution (10 mg/mL in 80% AcOH)
Water Content (Karl Fisher)	≤ 1%
TLC System	n-Butanol/Acetic acid/Water 4/2/2 Chloroform/Methanol/Acetic acid 32% 5/3/1 Chloroform/Methanol/Acetic acid/Water 60/45/14/6 Plate : HPTLC Detected by : UV, Ninhydrin, Chlorine-tolidine
Assay by titration	≥ 98% (HClO ₄)
Purity by TLC	≥ 99%
Application	Handle and store under inert gas.
Storage	Store at 0 - 8 °C

For Laboratory Use Only