

Chem-Impex International, Inc.

Tel: (630) 766-2112

E-mail: sales@chemimpex.com

Shipping and Correspondence:

935 Dillon Drive

Wood Dale, IL 60191

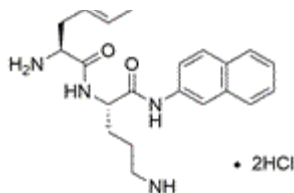
Fax: (630) 766-2218

Web site: www.chemimpex.com

Manufacturing site:

825 Dillon Drive

Wood Dale, IL 60191



Product Specifications

Catalogue Number	08994
Product	Phe-Arg-BNA•2HCl Phe-Arg β-naphthylamide dihydrochloride
CAS Number	100929-99-5
Molecular Formula	C ₂₅ H ₃₀ N ₆ O ₂ • 2HCl
Molecular Weight	519.47

Appearance	White powder
Solubility	Clear, colorless solution (50mg/mL in Methanol)
Water Content (Karl Fisher)	≤ 2%
TLC System	n-Butanol/Acetic acid/H ₂ O (4:2:2) Chloroform/Methanol/Acetic acid 32% (5:3:1) Ethylacetate/Pyridine/Acetic acid/H ₂ O (6:5:1:3) Plate: silicagel 60 F ₂₅₄ Detected by: UV, ninhydrin, chlorine-tolidine
Titration	Chloride content: ≥ 13% (AgNO ₃)
Assay	≥ 85% (Elemental analysis)
Purity by TLC	≥ 99%
Storage	Store at ≤ -4°C

For Laboratory Use Only