

Chem-Impex International, Inc.

Tel: (630) 766-2112

E-mail: sales@chemimpex.com

Shipping and Correspondence:

935 Dillon Drive

Wood Dale, IL 60191

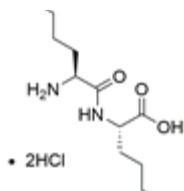
Fax: (630) 766-2218

Web site: www.chemimpex.com

Manufacturing site:

825 Dillon Drive

Wood Dale, IL 60191



Product Specifications

Catalogue Number	08894
Product	Lys-Lys-OH•2HCl L-Lysyl-L-lysine dihydrochloride H-Lys-Lys-OH•2HCl
CAS Number	52123-30-5
Molecular Formula	C ₁₂ H ₂₆ N ₄ O ₃
Molecular Weight	274.36

Appearance	White powder
Solubility	Clear, colorless solution (50 mg/mL in water)
Water Content (Karl Fisher)	≤ 0.3%
TLC System	Isopropanol : Ammonia conc. 1:1 n-Butanol : Acetic acid : Water 4:2:3 2-Butanol : Pyridine : Water 7:7:6 Plate : Silica gel 60 F254 Detected by : UV, Ninhydrin, Chlorine-tolidine
Titration	≤ 20.5% (Chloride content)
Assay	≥ 78% (Nth : 20.42% Elemental analysis)
Purity by TLC	≥ 99%
Storage	Store at < -10 °C

For Laboratory Use Only