

Chem-Impex International, Inc.

Tel: (630) 766-2112

E-mail: sales@chemimpex.com

Shipping and Correspondence:

935 Dillon Drive

Wood Dale, IL 60191

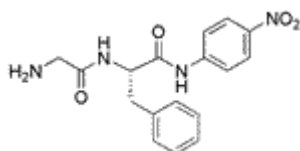
Fax: (630) 766-2218

Web site: www.chemimpex.com

Manufacturing site:

825 Dillon Drive

Wood Dale, IL 60191



Product Specifications

Catalogue Number	08669
Product	Gly-Phe-pNA Glycyl-L-phenylalanine <i>p</i> -nitroanilide
CAS Number	21027-72-5
Molecular Formula	C ₁₇ H ₁₈ N ₄ O ₄
Molecular Weight	342.35

Appearance	Slightly yellowish to white powder
Solubility	Clear, slightly yellow solution (50 mg/mL in DMF)
Elemental Analysis (Theory)	C = 59.6 ± 0.5%, H = 5.3 ± 0.5%, N = 16.4 ± 0.5%
TLC System	Chloroform/Methanol/Acetic acid (90:8:2) Chloroform/Methanol/Toluene/Water (8:8:8:1) Chloroform/Methanol/Acetic Acid /Water (45:13:1:2) Plate: Silicagel 60 F ₂₅₄ Detected by: UV, ninhydrin, TMB
Assay by titration	≥ 98%
Purity by TLC	≥ 99%
Storage	Store at 0 - 8 °C

For Laboratory Use Only