

Chem-Impex International, Inc.

Tel: (630) 766-2112

E-mail: sales@chemimpex.com

Shipping and Correspondence:

935 Dillon Drive

Wood Dale, IL 60191

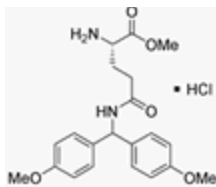
Fax: (630) 766-2218

Web site: www.chemimpex.com

Manufacturing site:

825 Dillon Drive

Wood Dale, IL 60191



Product Specifications

Catalogue Number	08498
Product	<i>N</i>^δ-4,4'-Dimethoxydityl-L-glutamine methyl ester hydrochloride L-Gln(Dod)-OMe•HCl
CAS Number	28252-55-3
Molecular Formula	C ₂₁ H ₂₆ N ₂ O ₅ •HCl
Molecular Weight	422.91
Appearance	White product
Solubility	Clear, colorless solution (50 mg/mL in Methanol)
Melting Point	176-180 °C
Elemental Analysis (Theory)	C = 59.13%; H = 6.40%; N = 6.57% (calculated as x 1.1 HCl (9.1% Cl))
Elemental Analysis (Found)	C = 58.89 ± 0.5%; H = 6.39 ± 0.5%; N = 6.37 ± 0.5% (calculated as x 1.1 HCl (9.1% Cl))
TLC System	Chloroform/Methanol/Acetic acid/H ₂ O (70:42:0.5:10) Ethylacetate/Pyridine/Acetic acid/H ₂ O (60:20:6:11) Chloroform/Methanol/Acetic acid(98-100%)/H ₂ O (45:13:1:2) Plate: silicagel 60 F ₂₅₄ Detected by: UV, ninhydrin, chlorine-tolidine
Titration	Chloride content: ≤ 9.5%
Purity by TLC	≥ 99%
Storage	Store at 0-8 °C

For Laboratory Use Only