

# Chem-Impex International, Inc.

---

**Tel:** (630) 766-2112

**E-mail:** sales@chemimpex.com

**Shipping and Correspondence:**

935 Dillon Drive

Wood Dale, IL 60191

**Fax:** (630) 766-2218

**Web site:** www.chemimpex.com

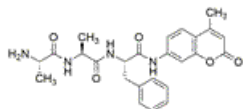
**Manufacturing site:**

825 Dillon Drive

Wood Dale, IL 60191

---

## Product Specifications



<b>Catalogue Number</b>	08250
<b>Product</b>	<b>H-Ala-Ala-Phe-AMC</b>
<b>CAS Number</b>	62037-41-6
<b>Molecular Formula</b>	C <sub>25</sub> H <sub>28</sub> N <sub>4</sub> O <sub>5</sub>
<b>Molecular Weight</b>	464.52

---

<b>Appearance</b>	Off-white powder
<b>Solubility</b>	Clear, colorless solution (10 mg/mL in Methanol)
<b>Water Content (Karl Fisher)</b>	≤ 1%
<b>TLC System</b>	Chloroform/Methanol/Acetic acid/Water : 70/42/0.5/10 Chloroform/Methanol/Acetic acid/Water : 45/13/1/2 Plate : Silicagel 60 F <sub>254</sub> Detected by : UV, ninhydrin, TMB
<b>Related Substances</b>	AMC (7-amino-4-methylcoumarin) : ≤ 0.1%
<b>Assay</b>	≥ 97% (Elemental analysis Nth : 12.06%)
<b>Purity by TLC</b>	≥ 99%
<b>Storage</b>	Store at 0 - 8 °C

**For Laboratory Use Only**