

# Chem-Impex International, Inc.

---

**Tel:** (630) 766-2112

**E-mail:** sales@chemimpex.com

**Shipping and Correspondence:**

935 Dillon Drive

Wood Dale, IL 60191

**Fax:** (630) 766-2218

**Web site:** www.chemimpex.com

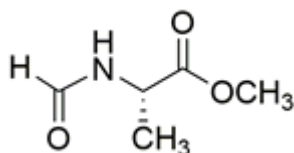
**Manufacturing site:**

825 Dillon Drive

Wood Dale, IL 60191

---

## Product Specifications



**Catalogue Number** 08095

**Product** **Formyl-L-alanine methyl ester**

For-L-Ala-OMe

**CAS Number** 32221-83-3

**Molecular Formula** C<sub>5</sub>H<sub>9</sub>NO<sub>3</sub>

**Molecular Weight** 131.13

---

**Appearance** Clear, yellow liquid

**Solubility** Clear, colorless solution (50 mg/mL in H<sub>2</sub>O)

**Elemental Analysis (Theory)** C = 45.7%; H = 6.9%; N = 10.7%

**Elemental Analysis (Found)** C = 45.3 ± 0.5%; H = 7.1 ± 0.5%; N = 16.8 ± 0.5% Cal. As x 0.02 H<sub>2</sub>O

**Water Content (Karl Fisher)** ≤ 0.5%

**TLC System** Chloroform/Methanol/Acetic Acid/H<sub>2</sub>O (70:42:0.5:10)  
Chloroform/Methanol/Acetic Acid/H<sub>2</sub>O (45:13:1:2)  
Benzene/Dioxane/Acetic Acid (95:25:4)  
Plate: silicagel 60 F<sub>254</sub>  
Detected by: UV, ninhydrin, chlorine-tolidine

**Purity by TLC** ≥ 98%

**Storage** Store at 0-8 °C

**For Laboratory Use Only**