

Chem-Impex International, Inc.

Tel: (630) 766-2112

E-mail: sales@chemimpex.com

Shipping and Correspondence:

935 Dillon Drive

Wood Dale, IL 60191

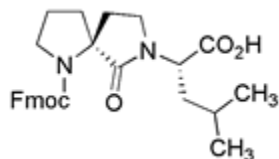
Fax: (630) 766-2218

Web site: www.chemimpex.com

Manufacturing site:

825 Dillon Drive

Wood Dale, IL 60191



Product Specifications

Catalogue Number	07371
Product	Fmoc-(S,S)-[Pro-Leu]-spirolactame
CAS Number	129605-53-4
Molecular Formula	C ₂₈ H ₃₂ N ₂ O ₅
Molecular Weight	476.57

Appearance	White powder
Optical Rotation	[α] _D ²⁰ = -19 ± 2° (C=1 in DMF)
Analysis by Mass Spectra	[M+H] ⁺ = 476.57 ± 1
¹³C NMR	Conforms to structure
¹H NMR	Conforms to structure
Purity by HPLC	≥ 97%
Storage	Store at 0-8 °C

For Laboratory Use Only