

Chem-Impex International, Inc.

Tel: (630) 766-2112

E-mail: sales@chemimpex.com

Shipping and Correspondence:

935 Dillon Drive

Wood Dale, IL 60191

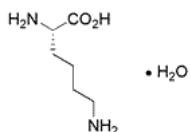
Fax: (630) 766-2218

Web site: www.chemimpex.com

Manufacturing site:

825 Dillon Drive

Wood Dale, IL 60191



Product Specifications

Catalogue Number	07263
Product	L-Lysine hydrate L-Lys-OH•H ₂ O (S)-2,6-Diaminohexanoic acid monohydrate
CAS Number	39665-12-8
Molecular Formula	C ₆ H ₁₄ N ₂ O ₂ ·H ₂ O
Molecular Weight	164.2

Appearance	White or yellow crystalline powder
Heavy Metals	≤ 10 ppm (as Pb)
Anion	Chloride (Cl ⁻) : ≤ 0.020%
Cation	Ammonium (NH ₄ ⁺) : ≤ 0.020% Iron (Fe) : ≤ 10 ppm Arsenic (As) : ≤ 1 ppm
Optical Rotation	[α] _D ²⁰ = 23 - 27 °
Loss on Drying	≤ 11%
Residue On Ignition	≤ 0.50%
Assay	≥ 99%
Storage	Store at RT

For Laboratory Use Only