

Chem-Impex International, Inc.

Tel: (630) 766-2112

E-mail: sales@chemimpex.com

Shipping and Correspondence:

935 Dillon Drive

Wood Dale, IL 60191

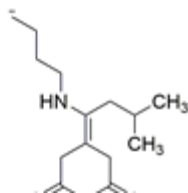
Fax: (630) 766-2218

Web site: www.chemimpex.com

Manufacturing site:

825 Dillon Drive

Wood Dale, IL 60191



Product Specifications

Catalogue Number	07109
Product	<i>N</i>^α-Fmoc-<i>N</i>^ε-1-(4,4-dimethyl-2,6- Fmoc-L-Lys(ivDde)-OH
CAS Number	204777-78-6
Molecular Formula	C ₃₄ H ₄₂ N ₂ O ₆
Molecular Weight	574.72

Appearance	White to off-white or pale yellow crystalline powder
Purity by HPLC	≥ 98%
Application	ivDde = 1-(4,4-Dimethyl-2,6-dioxo-cyclohexylidene)-3-methyl-butyl The ivDde protective group possesses higher orthogonality regarding Boc and Fmoc in comparison to Dde.
Storage	Store at 0 - 8 °C

For Laboratory Use Only