

# *Chem-Impex International, Inc.*

---

**Tel:** (630) 766-2112

**E-mail:** sales@chemimpex.com

**Shipping and Correspondence:**

935 Dillon Drive

Wood Dale, IL 60191

**Fax:** (630) 766-2218

**Web site:** www.chemimpex.com

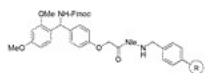
**Manufacturing site:**

825 Dillon Drive

Wood Dale, IL 60191

---

## *Product Specifications*



**Catalogue Number**

06811

**Product**

**Rink amide AM resin (with Nle)  
(0.3-0.6 mmol/g, 100-200 mesh)**

4-(2',4'-Dimethoxyphenyl-Fmoc-aminomethyl)  
phenoxyacetamidonorleucylaminomethyl resin

---

**Appearance**

Yellow

**Swelling in DMF**

≥ 4 ml/g in 24h

**Kaiser Test**

Negative to slightly positive

**Solvent**

Solvent free flow through G2 frit

**Mesh Size**

100-200 mesh

**Substitution (meq/g)**

0.3-0.6 mmol/g

**% DVB**

1% DVB

**Storage**

Store at 0-8 °C

**For Laboratory Use Only**