

Chem-Impex International, Inc.

Tel: (630) 766-2112

E-mail: sales@chemimpex.com

Shipping and Correspondence:

935 Dillon Drive

Wood Dale, IL 60191

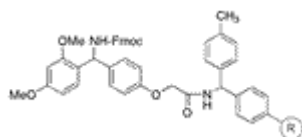
Fax: (630) 766-2218

Web site: www.chemimpex.com

Manufacturing site:

825 Dillon Drive

Wood Dale, IL 60191



Product Specifications

Catalogue Number	06752
Product	4-(2',4'-Dimethoxyphenyl-Fmoc-aminomethyl) Rink amide MBHA resin
CAS Number	431041-83-7

Appearance	Pale white or slight yellow beads
Swelling in DCM	5.0 - 9.0 mL/gm
Swelling in DMF	5.0 - 8.0 mL/gm
Kaiser Test	Negative
Infrared Spectrum	Conforms to structure
Loss on Drying	≤ 2%
Mesh Size	200 - 400
Substitution (meq/g)	0.6 - 0.8 meq/g (By UV spectroscopy after coupling with Fmoc-Leu-OH)
% DVB	1% DVB
Storage	Store at 0 - 8 °C

For Laboratory Use Only