

Chem-Impex International, Inc.

Tel: (630) 766-2112

E-mail: sales@chemimpex.com

Shipping and Correspondence:

935 Dillon Drive

Wood Dale, IL 60191

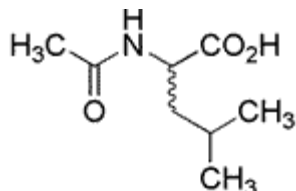
Fax: (630) 766-2218

Web site: www.chemimpex.com

Manufacturing site:

825 Dillon Drive

Wood Dale, IL 60191



Product Specifications

Catalogue Number 06647

Product **Acetyl-DL-leucine**

Ac-DL-Leu-OH

(*RS*)-Ac-2-amino-4-methyl-pentanoic acid

CAS Number 99-15-0

Molecular Formula C₈H₁₅NO₃

Molecular Weight 173.2

Appearance White crystals or crystalline powder

Heavy Metals ≤ 20 ppm (as Pb)

Cation Arsenic : ≤ 2.0 ppm

pH 1.7 - 3.0

Optical Rotation [α]²⁰_D = -1.0 to +1.0 °

Transmission State of solution : ≥ 95%

Loss on Drying ≤ 0.5%

Residue On Ignition ≤ 0.3%

Assay 97.5 - 102.5%

Storage Store at 0 - 8 °C

For Laboratory Use Only