

Chem-Impex International, Inc.

Tel: (630) 766-2112

E-mail: sales@chemimpex.com

Shipping and Correspondence:

935 Dillon Drive

Wood Dale, IL 60191

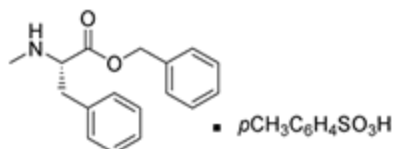
Fax: (630) 766-2218

Web site: www.chemimpex.com

Manufacturing site:

825 Dillon Drive

Wood Dale, IL 60191



Product Specifications

Catalogue Number	06353
Product	<i>N</i>^α-Methyl-L-phenylalanine benzyl ester 4-toluenesulfonate salt N-Me-L-Phe-OBzl•TosOH
CAS Number	40298-25-7
Molecular Formula	$\text{C}_{17}\text{H}_{19}\text{NO}_2 \cdot \text{C}_7\text{H}_8\text{O}_3\text{S}$
Molecular Weight	441.51
<hr/>	
Appearance	White powder
Melting Point	109 °C
Optical Rotation	$[\alpha]_D^{20} = 16 \pm 1^\circ$ (C=1 in CH_2Cl_2)
Insoluble material	≤ 0.5%
Purity	≥ 98%
Storage	Store at 0 - 8 °C

For Laboratory Use Only