

Chem-Impex International, Inc.

Tel: (630) 766-2112

E-mail: sales@chemimpex.com

Shipping and Correspondence:

935 Dillon Drive

Wood Dale, IL 60191

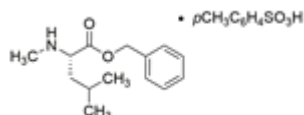
Fax: (630) 766-2218

Web site: www.chemimpex.com

Manufacturing site:

825 Dillon Drive

Wood Dale, IL 60191



Product Specifications

Catalogue Number	06348
Product	N-Methyl-L-Leucine benzyl ester 4- N-Me-L-Leu-OBzl•TosOH
CAS Number	42807-66-9
Molecular Formula	C ₁₄ H ₂₁ NO ₂ ·C ₇ H ₈ O ₃ S
Molecular Weight	407.52

Appearance	White powder
Solubility	Clear solution (0.3 g in 2 ml MeOH)
Melting Point	111 - 134 °C
Water Content (Karl Fisher)	≤ 1%
Optical Rotation	[α] _D ²⁰ = 3 ± 2 ° (C=2 in DMF)
Infrared Spectrum	Conforms to structure
Analysis by Mass Spectra	Conforms to standard
Loss on Drying	≤ 1% (50 °C, 2h)
¹H NMR	Conforms to structure
Purity by HPLC	≥ 99%
Storage	Store at 0 - 8 °C

For Laboratory Use Only