

Chem-Impex International, Inc.

Tel: (630) 766-2112

E-mail: sales@chemimpex.com

Shipping and Correspondence:

935 Dillon Drive

Wood Dale, IL 60191

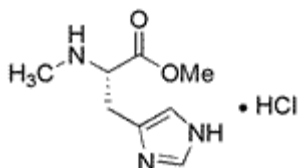
Fax: (630) 766-2218

Web site: www.chemimpex.com

Manufacturing site:

825 Dillon Drive

Wood Dale, IL 60191



Product Specifications

Catalogue Number	06347
Product	N^α-Methyl-L-histidine methyl ester hydrochloride N-Me-L-His-OMe•HCl
CAS Number	118384-75-1
Molecular Formula	C ₈ H ₁₃ N ₃ O ₂ •HCl
Molecular Weight	219.6
<hr/>	
Appearance	White powder
Solubility	Clear, colorless solution (50 mg/ml in water)
Water Content (Karl Fisher)	≤ 0.5%
TLC System	n-Butanol/acetic acid/water 4/2/2 2-Butanol/ammonia 3% 100/44 Methanol/chloroform/ammonium hydroxide conc. 5/5/1 Plate: Silicagel 60 F ₂₅₄ Detected: UV, ninhydrin, chlorine-tolidine
Titration	≤ 28% (Chloride content)
Assay	≥ 71%
Purity by TLC	≥ 99%
Storage	Store at ≤ -4°C

For Laboratory Use Only