

Chem-Impex International, Inc.

Tel: (630) 766-2112

E-mail: sales@chemimpex.com

Shipping and Correspondence:

935 Dillon Drive

Wood Dale, IL 60191

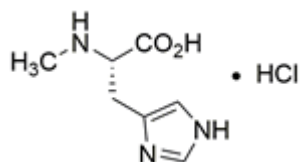
Fax: (630) 766-2218

Web site: www.chemimpex.com

Manufacturing site:

825 Dillon Drive

Wood Dale, IL 60191



Product Specifications

Catalogue Number	06346
Product	N^α-Methyl-L-histidine hydrochloride N-Me-L-His-OH•HCl
CAS Number	17451-62-6
Molecular Formula	C ₇ H ₁₁ N ₃ O ₂ ·HCl
Molecular Weight	205.6

Appearance	White powder
Solubility	Clear, colorless solution (50 mg/mL in water)
Elemental Analysis (Theory)	C : 40.9 ± 0.5%, H : 5.9 ± 0.5%, N : 20.4 ± 0.5%
Anion	Chloride content by titration : ≤ 17% (AgNO ₃)
Water Content (Karl Fisher)	≤ 1%
TLC System	n-butanol / acetic acid / water , 4:2:2 Methanol / chloroform / ammonia 17%, 2:2:1 Isopropanol / ammonia conc., 1:1 Plate : Silicagel 60 F ₂₅₄ detected by : UV, ninhydrin, chlorine-tolidine, Pauly
Optical Rotation	[α] _D ²⁴ = 30 ± 1 ° (C=1 in 5N HCl)
Residual Solvents	DMSO : ≤ 4%
Purity by TLC	≥ 99%
Storage	Store at 0 - 8 °C

For Laboratory Use Only