

Chem-Impex International, Inc.

Tel: (630) 766-2112

E-mail: sales@chemimpex.com

Shipping and Correspondence:

935 Dillon Drive

Wood Dale, IL 60191

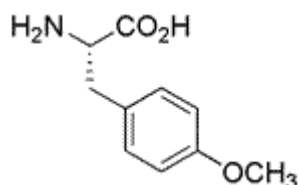
Fax: (630) 766-2218

Web site: www.chemimpex.com

Manufacturing site:

825 Dillon Drive

Wood Dale, IL 60191



Product Specifications

Catalogue Number	06251
Product	O-Methyl-L-tyrosine L-Tyr(Me)-OH <i>p</i> -Methoxy-phenylalanine
CAS Number	6230-11-1
Molecular Formula	C ₁₀ H ₁₃ NO ₃
Molecular Weight	195.22

Appearance	White to off-white powder
Solubility	Clear solution (0.1 g in 4 mL TFA)
Melting Point	225-248 °C
Optical Rotation	[α] _D ²⁰ = -8.5 ± 2° (C=2, 1N HCl)
Infrared Spectrum	Conforms to structure
Analysis by Mass Spectra	Conforms to standard
Loss on Drying	≤ 1.0% (80 °C, 2h)
¹ H NMR	Conforms to structure
Purity by HPLC	≥ 99%
Storage	Store at 0-8 °C

For Laboratory Use Only