

# Chem-Impex International, Inc.

---

**Tel:** (630) 766-2112

**E-mail:** sales@chemimpex.com

**Shipping and Correspondence:**

935 Dillon Drive

Wood Dale, IL 60191

**Fax:** (630) 766-2218

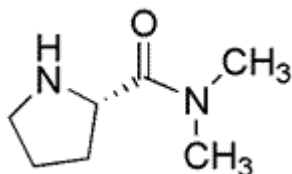
**Web site:** www.chemimpex.com

**Manufacturing site:**

825 Dillon Drive

Wood Dale, IL 60191

---



## Product Specifications

<b>Catalogue Number</b>	06200
<b>Product</b>	<b>L-Proline dimethylamide</b>
	L-Pro-NMe <sub>2</sub>
	(S)-Pyrrolidine-2-carboxylic acid dimethylamide
<b>CAS Number</b>	29802-22-0
<b>Molecular Formula</b>	C <sub>7</sub> H <sub>14</sub> N <sub>2</sub> O
<b>Molecular Weight</b>	142.2
<hr/>	
<b>Appearance</b>	Colorless to yellow liquid
<b>Water Content (Karl Fisher)</b>	≤ 0.5%
<b><sup>1</sup>H NMR</b>	Conforms to structure
<b>D-Enantiomer</b>	≤ 1%
<b>Purity by GC</b>	≥ 98%
<b>Chiral Purity</b>	≥ 99% (ee)
<b>Storage</b>	Store at 0 - 8 °C

**For Laboratory Use Only**