

Chem-Impex International, Inc.

Tel: (630) 766-2112

E-mail: sales@chemimpex.com

Shipping and Correspondence:

935 Dillon Drive

Wood Dale, IL 60191

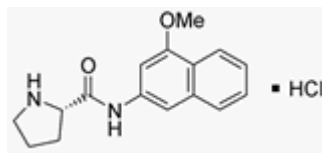
Fax: (630) 766-2218

Web site: www.chemimpex.com

Manufacturing site:

825 Dillon Drive

Wood Dale, IL 60191



Product Specifications

Catalogue Number	06194
Product	L-Proline 4-methoxy-β-naphthylamide L-Pro-4M β NA•HCl
CAS Number	100930-07-2
Molecular Formula	C ₁₆ H ₁₈ N ₂ O ₂ •HCl
Molecular Weight	306.82

Appearance	White powder
Solubility	Clear, colorless solution (50 mg/mL in Methanol)
TLC System	n-Butanol/Acetic acid/Water (4:2:2) Chloroform/Methanol/Acetic acid 32% (5:3:1) Ethyl acetate/Pyridine/Acetic acid/Water (60:20:6:11) Plate : silicagel 60 F ₂₅₄ Detected by : UV, ninhydrin, TMB
Related Substances	4-Methoxy- β -naphthylamine : \leq 0.1%
Titration	\geq 11% Chloride content (AgNO ₃)
Purity by TLC	\geq 99%
Storage	Store at 0 - 8 °C

For Laboratory Use Only