

# Chem-Impex International, Inc.

---

**Tel:** (630) 766-2112

**E-mail:** sales@chemimpex.com

**Shipping and Correspondence:**

935 Dillon Drive

Wood Dale, IL 60191

**Fax:** (630) 766-2218

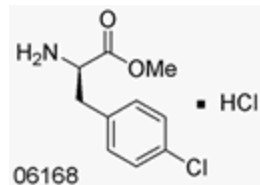
**Web site:** www.chemimpex.com

**Manufacturing site:**

825 Dillon Drive

Wood Dale, IL 60191

---



## Product Specifications

<b>Catalogue Number</b>	06168
<b>Product</b>	<b>4-Chloro-D-phenylalanine methyl ester hydrochloride</b> D-Phe(4-Cl)-OMe•HCl  <i>p</i> -Chloro-D-Phe-OMe•HCl
<b>CAS Number</b>	33965-47-8
<b>Molecular Formula</b>	C <sub>10</sub> H <sub>12</sub> ClNO <sub>2</sub> •HCl
<b>Molecular Weight</b>	250.1
<b>Appearance</b>	White powder
<b>Melting Point</b>	200 - 203 °C
<b>Optical Rotation</b>	[α] <sup>20</sup> <sub>D</sub> = -41 ± 2 ° (C=1.012 in DMF)
<b>Purity by HPLC</b>	≥ 98%
<b>Storage</b>	Store at 0 - 8 °C

---

**For Laboratory Use Only**