

Chem-Impex International, Inc.

Tel: (630) 766-2112

E-mail: sales@chemimpex.com

Shipping and Correspondence:

935 Dillon Drive

Wood Dale, IL 60191

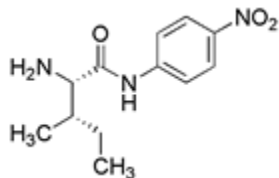
Fax: (630) 766-2218

Web site: www.chemimpex.com

Manufacturing site:

825 Dillon Drive

Wood Dale, IL 60191



Product Specifications

Catalogue Number	06113
Product	L-Isoleucine 4-nitroanilide
	L-Ile-pNA
CAS Number	70324-66-2
Molecular Formula	C ₁₂ H ₁₇ N ₃ O ₃
Molecular Weight	251.29

Appearance	Yellow to white powder with tubbers
Appearance of Solution	Clear, yellow solution (50 mg/ml in methanol)
Solubility	Clear solution (5% in methanol)
Melting Point	58-62 °C
Optical Rotation	[α] _D ²⁴ = +125 ± 2° (C=1% in 1N HCl)
Assay	≥ 99%
Purity by TLC	≥ 99%
Storage	Store at 0-8°C

For Laboratory Use Only